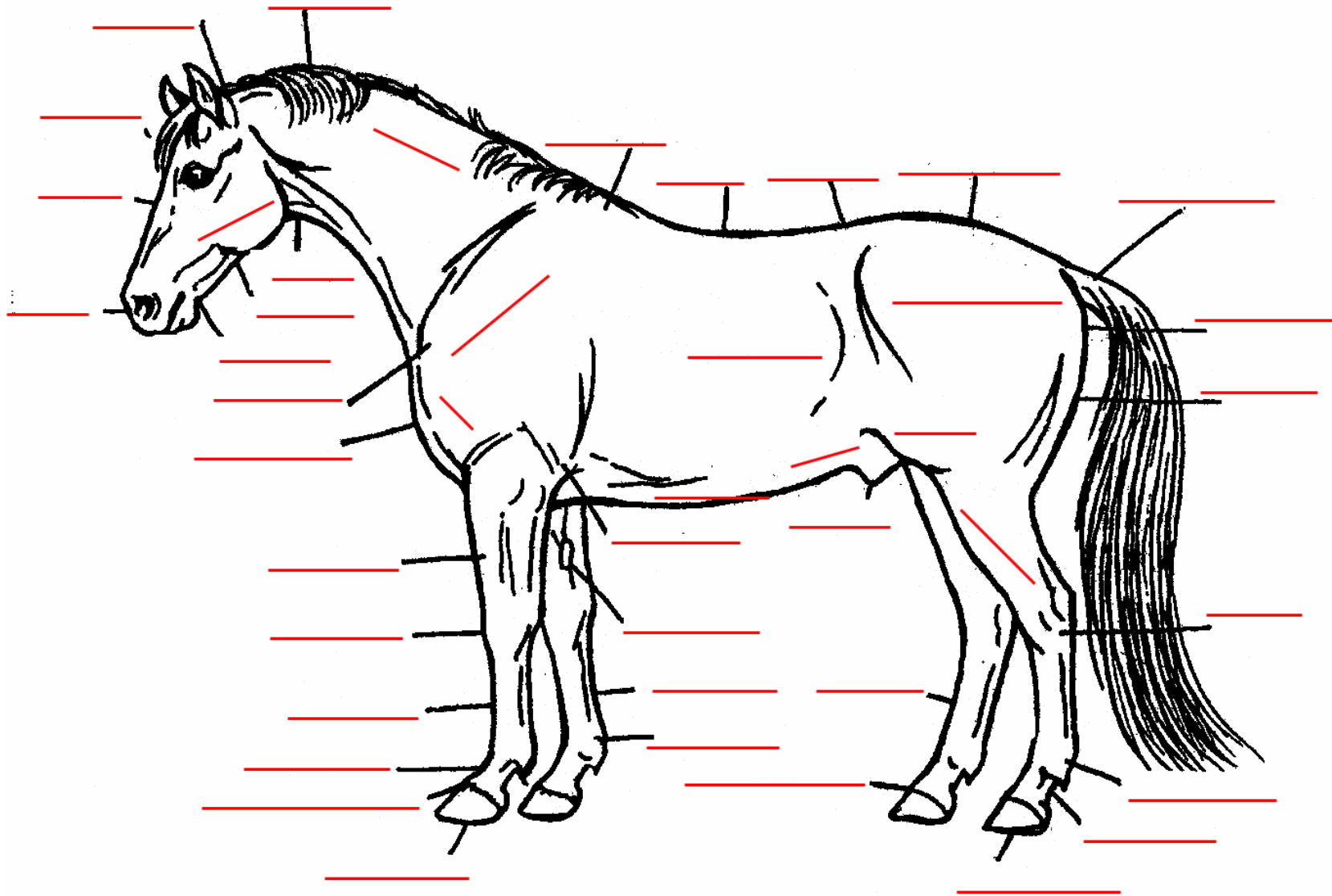


Can You Label All Parts of This Pony?

Write the name of each part on the red line that points to it. Use the word bank ONLY if you can't remember a part – see if you can do the whole pony without using the word bank!



Can You Label All Parts of This Pony?

arm

back

barrel

belly

buttock

cannon bone (fore)

cannon bone (hind)

cheek

chest

chestnut

chin groove

coronary band (fore)

coronary band (hind)

crest

croup

dock

elbow

face

fetlock joint (fore)

fetlock joint (hind)

flank

forearm

forelock

gaskin

hindquarters

hock

hoof (fore)

hoof (hind)

jaw

knee

loin

mane

muzzle

pastern (fore)

pastern (hind)

point of buttock

point of shoulder

poll

sheath

shoulder

stifle

tendons

throttle

withers

Can You Label All Parts of This Pony?

